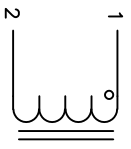


The information contained in this drawing is the sole property of CWS Coil Winding Specialist. Any reproduction in part or whole without written permission of CWS Coil Winding Specialist is prohibited.

DIMENSIONAL TOLERANCES					
INCHES (MM)					
A	B	C	D	X	
MAX	MAX	MIN	REF	REF	
0.59 [15.00]	0.30 [7.62]	0.50 [12.70]	0.03 [0.64]	0.51 [13.00]	



SCHEMATIC

- 7 BUILD TO ROHS COMPLIANCE AND LEAD FREE.  
USING A PERMANENT MARKING METHOD  
MARK PART NUMBER, REVISION AND DATE CODE  
WRAP INDUCTOR WITH 3M # 79 TAPE OR EQUAL

- 6 (I.E. COIL MUST REST FLAT ON PCB). LEADS MUST BE TANGENT TO THE CORE  
REMOVE INSULATION AND TIN LEADS 0.5 INCH. FLUSH WITH THE COIL EDGE  
WIND COILS EVENLY SPACED AROUND THE CORE  
CONSTRUCTION:

THESE SPECIFICATIONS ARE BASED ON LOW RIPPLE CURRENT WEIGHT: 3 GRAMS TYPICAL  
INTERWINDING CAPACITANCE = 6.15pF TYP @ SRF  
SRF = 8.34 MHz TYPICAL  
|Z| = 3 KIL-OHMS TYP @ SRF  
RECOMMENDED AMBIENT OPERATING TEMP: -40°C TO 155°C  
HI-POT TEST FOR WINDING TO CORE ISOLATION = 500VDC MIN.  
INDUCTOR CURRENT RATING : 3.0 AMPS, 20°C TEMP. RISE WITH SOME AIR FLOW  
DCR = 40.0 MILLI-OHMS MAX.  
INDUCTOR DC BIAS: SEE TABLE ON THE RIGHT

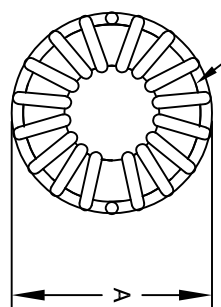
- 3 SPECIFICATIONS: @ 25°C:  
WIRE: UL RECOGNIZED 200°C RATED MAGNET WIRE  
CORE: POWDERED TOROIDAL CORE, CWS BYTE-MARK OR OTHER APPROVED PART

- 2 MATERIAL: UL RECOGNIZED 94V-0 FOR FLAMMABILITY, RATING CLASS B (130°C MIN.) REQUIRED  
ANY TOLERANCE. THIS DIM. CAN VARY A LITTLE FROM PART TO PART.  
\*TYP IN DIM. TOL. TABLE REFERS TO A NON-CRITICAL TYPICAL (AVERAGE) DIM. WITHOUT

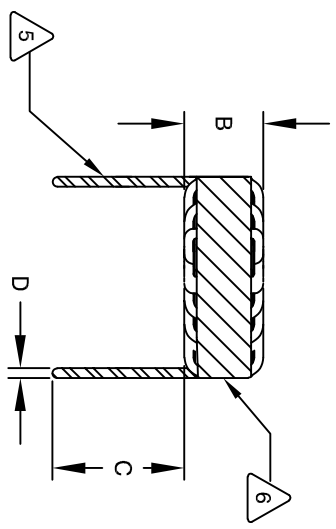
NOTES: UNLESS OTHERWISE STATED, READ NOTES FROM BOTTOM UP.  
CAGE CODE: 5DMIE2

REVISION HISTORY

REV	ECN	DESCRIPTION	BY	DATE	CHK	DATE
B	-	UPDATED SPEC.	TN	08/01/2020	JL	08/01/2020
C	121024	REVISED MAX DCR & A DIM.	TN	12/10/24	JL	12/10/24



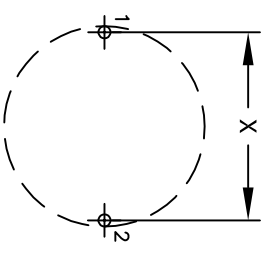
BOTTOM VIEW



FRONT VIEW

DC BIAS (AMP)	L@ 1KHz (REF)
0	57uH
1.0	52uH
2.0	42uH
3.0	32uH

DC BIAS TABLE



MOUNTING HOLES PATTERN

CODE IDENT	MFG. P/N	DESCRIPTION	ITEM NO.
<b>PARTS LIST</b>			
AUTOCAD SIGN	X	CWS Coil Winding Specialist.	
SOLIDWORKS SIGN		353 W. Grove Ave.	
		Orange, CA. 92865	
DRAWN TDK	DATE 08/10/17	<b>TOROIDAL POWER INDUCTOR</b> 60uH, 3.0 Amps, Horizontal	
ENGR. KSUM	DATE 08/10/17		
APPR. JLAU	DATE 08/10/17		
TITLE: TOROIDAL POWER INDUCTOR		SIZE: B	REV: C
DRAWN: TDK		SCALE: 2=1	SHEET 1 OF 1
ENGR: KSUM			
APPR: JLAU			